

# GUIDER II<sub>s</sub>

With large building volume and multiple nozzle diameter options, Guider IIs can meet diversity printing demands of high strength and conventional filaments in offices, schools and industries. Adopting air filtration system, it is safer and more environmental-friendly that Guider IIs is your prior choice to improve production and manufacturing efficiency.



## 300°C

### All Upgrade High-temperature Extruder

- It can reach to 300°C, so as to support more filament printing.
- Instead of coming as a spare part.

#### FILAMENT

ASA

PETG

PC

PA

ABS

PLA

PLA Change Color

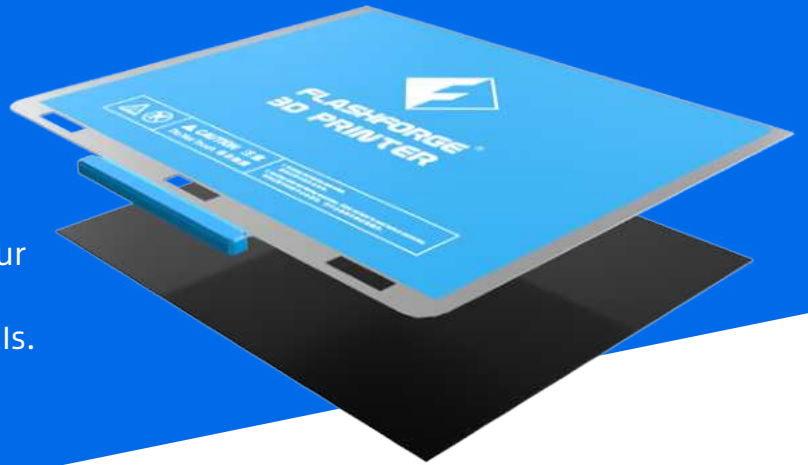
PLA METAL

PA-CF

PA-GF

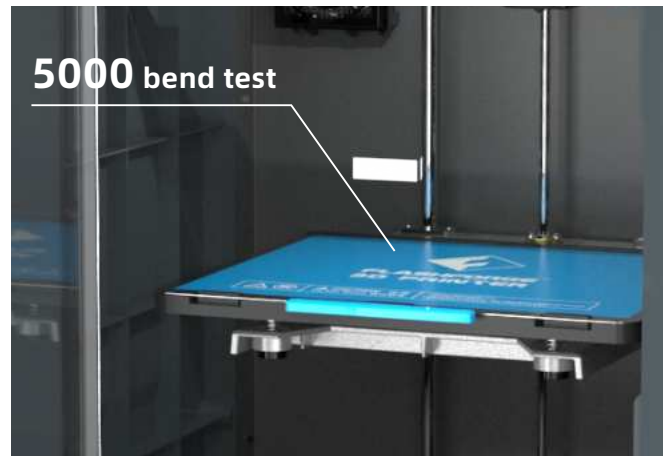
# New Platform, New Experience

Glass platform or flexible one, it is at your choice. So as to meet different needs. An upgrade from last version of Guider IIs. It now includes a flexible spring build plate assy, helping to take off printed models easily.



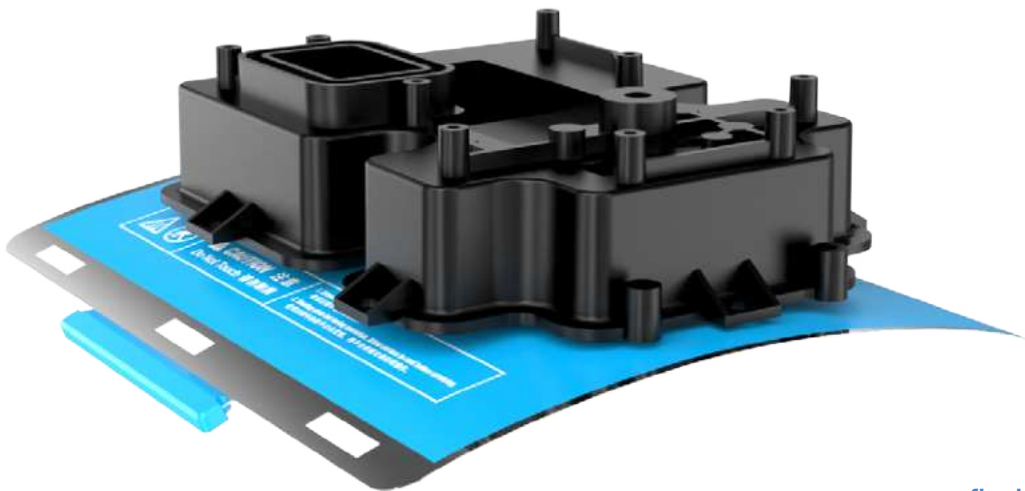
## ① Glass Platform

Using glass platform (without sticker) to get smoother model bottom;  
Suggested filament: ABS/PLA/ASA/  
PETG/PC



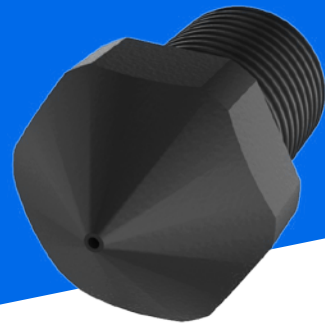
## ② Flexible Platform

Using flexible platform to remove models easier; Suggested filament: ABS/PLA/ASA/PETG/PA/PA-CF/PA-GF

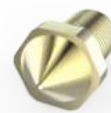
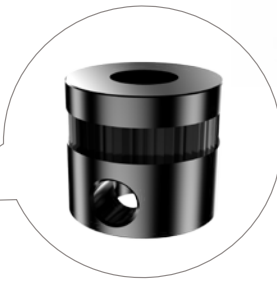
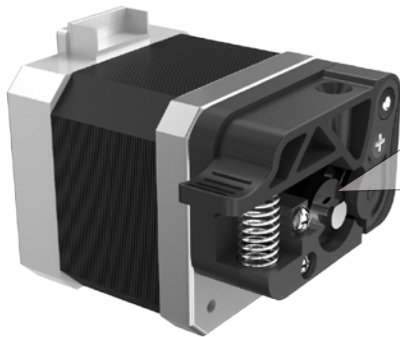


# Hardened Nozzle

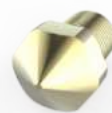
Support conforming filament, such as PA-CF and PA-GF; It also supports common filament.



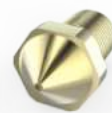
0.4mm hardened nozzle (1.75)



0.3mm



0.4mm



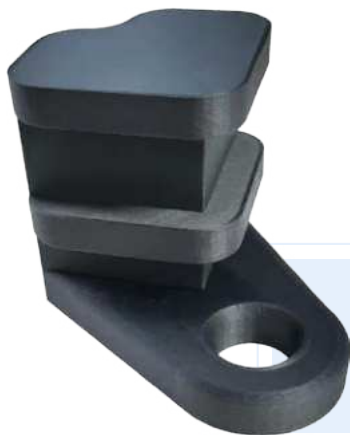
0.6mm



0.8mm

**Multi nozzle options**  
(1.75)

Hardened feeding gear for printing carbon filled filament. Custom machined teeth on the hobbled gearing for serious grip on filament.



**PA-CF Model**



**PA-GF Model**



## FUNCTIONS

Heatable-platform

Auxiliary-leveling

Filament-detection

Build in-camera

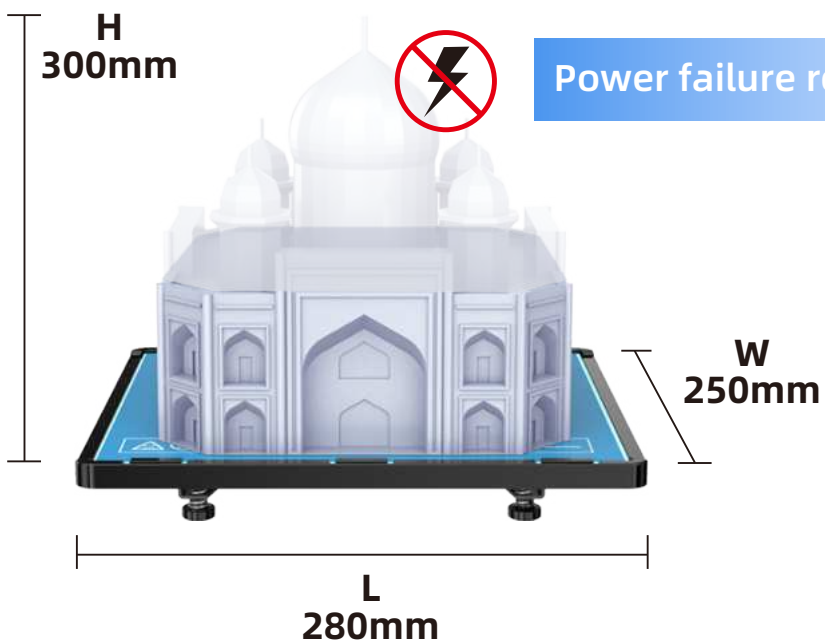
Fully-enclosed body

Resume printing

Touch screen

Wifi

Ethernet



## PARAMETERS

### PRINT

Extruder number:	1
Extruder diameter:	Optional: 0.3/0.4/0.6/0.8mm
	Optional: Hardened 0.4mm nozzle
Highest set temperature of extruder:	300°C
Build Volume:	280*250*300mm
Print Speed:	10-150mm/s
Highest set temperature of platform:	120°C

### DEVICE

Printer Volume:	550*490*570mm
Screen:	5-inch Touch Screen
Net Weight:	30kg
Input:	100-240 VAC,47-63Hz
Power:	500w
Internal Storage:	8G
Spool:	External

### COMMUNICATION

Data transmission:	USB cable,USB stick,Wi-Fi,Ethernet,FlashCloud,PolarCloud
Software:	FlashPrint
Output:	GX/G files
Input:	3MF/STL/OBJ/FPP/BMP/PNG/JPG/JPEG files